

STB27FC(A)-40WL

0...10V Dimming
Drive lamp's driver



Type	STB27FC-40WL
Notes	Released version by JL
Catalog Number	Rev.03_2023-11-30

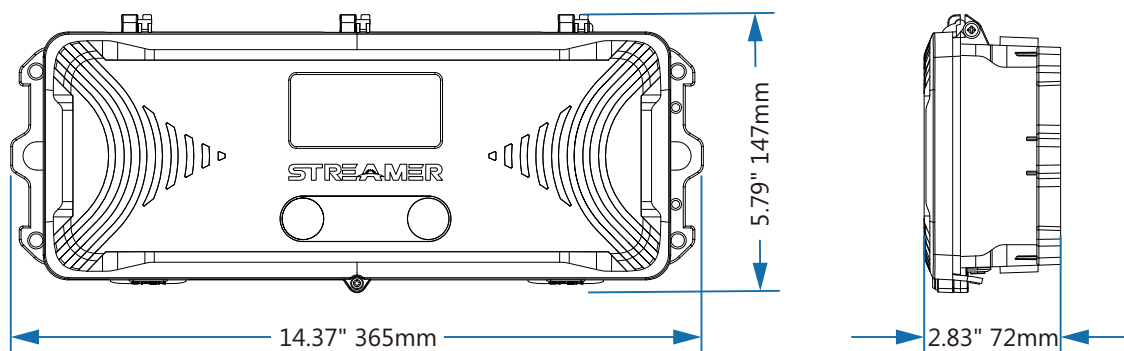
Applications

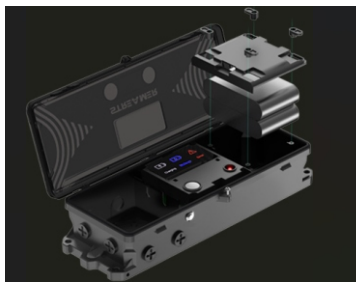
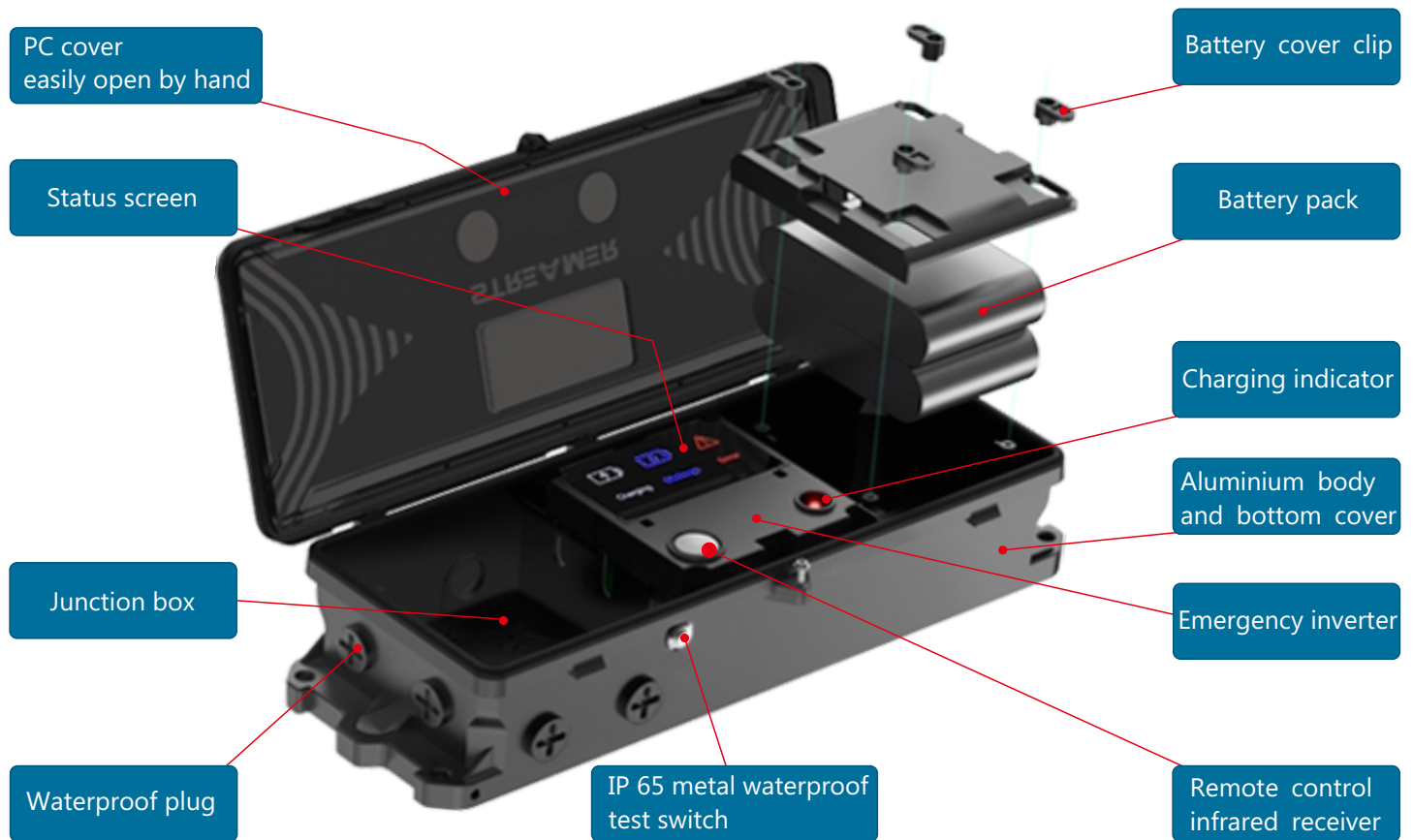
- UL Listed for wet locations.
- Suit for 40-300W lamp with 0-10V dimming function.
- Suit for 10-40W below lamp with or without 0-10V dimming function.
- AC120V sine wave and DC130-190V Output.
- Manual test and remote control test.
- Built-in high power AC relay to control normal led driver operation.
- Used with Lithium iron phosphate battery.
- Over-discharging protection
- Rest mode
- 90 minutes emergency time.
- Waterproof and independent battery pack that can be easily replaced by hand. Battery pack with built-in charging and discharging protection board.
- Junction box is included.
- Ambient range ta 0...60°C
- Initial functional self-test
- Product status screen
- IP65 Waterproof

Ordering data

Model No.	Rated input	Rated Output	Emergency time	Battery pack
STB27FC-40WL-LFPB4S2P-DC	AC100-347V,50/60Hz, 150mA 8.5W max P.F: 0.6@100V,0.5@347V	DC 130-190V 40W max	>90 minutes	LiFePO ₄ 12.8V 6.6Ah, 84.48Wh HT IFR26650×8 pcs,4s2p
STB27FCA-40WL-LFPB4S2P-DC	AC100-277V,50/60Hz, 150mA 8.5W max P.F: 0.6@100V,0.5@277V	DC 130-190V 40W max	>90 minutes	LiFePO ₄ 12.8V 6.6Ah, 84.48Wh HT IFR26650×8 pcs,4s2p
STB27FC-40WL-LFPB4S2P-AC	AC100-347V,50/60Hz, 150mA 8.5W max P.F: 0.6@100V,0.5@347V	AC 120V sine wave 40W max	>90 minutes	LiFePO ₄ 12.8V 6.6Ah, 84.48Wh HT IFR26650×8 pcs,4s2p
STB27FCA-40WL-LFPB4S2P-AC	AC100-277V,50/60Hz, 150mA 8.5W max P.F: 0.6@100V,0.5@277V	AC 120V sine wave 40W max	>90 minutes	LiFePO ₄ 12.8V 6.6Ah, 84.48Wh HT IFR26650×8 pcs,4s2p

Dimensions





Battery pack

- Lithium iron phosphate battery.
- Easily replaced by hand
- Users can rotate the clip on the battery cover to remove the cover and replace battery pack.

Test switch

- Press switch to enter into emergency mode, release to recover charging mode

Infrared remote control receiver

Max. receiving distance is 12 meters(straight line)



LED indicator




- Red stable: Charging mode
- Charging Fully
- OFF: Emergency mode



Screen shows

Back lit status screen shows three status of emergency pack:

- Charging
- Discharging
- Faulty mode

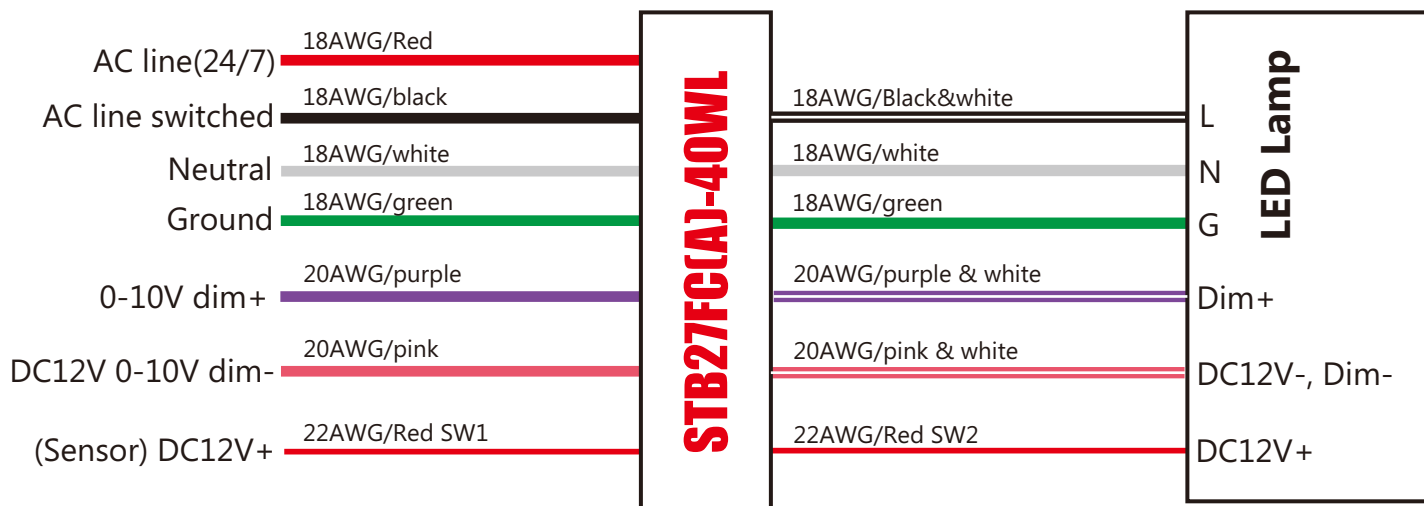
State	Status	Comment
 Charging	Charging	AC mode
 Discharging	Discharging	DC mode
 Error	Failure	Open circuit/ Short circuit Led failure, no battery (emergency mode)

Rest mode

Rest mode can ensure battery long term storage, leakage current is very low in rest mode.

- Press and hold the test switch for over 3 seconds in the emergency mode to enter into rest mode.
- In rest mode, the battery is completely disconnected from the inverter, and the small leakage current can make its storage time longer.

Wiring schematic diagram



* SW1, SW2 Operation

In AC normal mode, Sw1 connects with Sw2.

in DC emergency mode, Sw1 disconnects with Sw2, no output from Sw1.

Initial functional self-test

Description:

Emergency pack will make a initial functional self-test automatically.

Checking points as below:

- Compatibility with lamp
- Lamp starting current
- Lamp starting time
- Dimming starting voltage
- Dimming slope

After passing the test, emergency pack goes to operate normally.

Faulty mode shows on the status screen if it doesn't pass the test.

It will never start this test again afterward, otherwise it goes into rest mode or battery is disconnected.

Cancel faulty mode

- End discharge
- Disconnect battery in emergency mode.
- Press test button over 3 seconds in emergency mode.

Warranty

- Warranty 5 years, Battery pack 5years
- Except for the following circumstances:
 - 1) Improper installation or operation.
 - 2) Misuse.
 - 3) Abuse.
 - 4) Unauthorized or improper repair alteration.
 - 5) Accident or negligence in use, storage, transportation.
 - 6) Any natural acts.

* If users would like to change the batteries pack, please use the nominated models of STREAMER , then it will be under the warranty .

Installation rendering



TEST SWITCH OPERATIONS

Manual Diagnostic Mode:

Emergency mode will be enabled if the test switch is pressed when main power is on. Press and hold the test switch for 5 seconds to exit emergency test mode.

Emergency mode can also be enabled with used of the "TEST" button on the remote control .Press to enter test mode.

Self Test Mode:



The STB27FC contains a circuit that automatically performs a 30 second discharge test monthly and a full 90 minute discharge test every 6 months.

During routine testing, the emergency driver will switch to emergency mode and monitor the operation of the LED load.,battery voltage, LEDload connections and duration under emergency mode.

If the emergency system functions properly the unit will return to normal operation, Should the unit detect any problems, the indicator light will flash per failure conditions (see table below) until the condition has been corrected and the unit passes the.

Indicator Light	Status	Comment
Red Stable	Charging Mode Fully charged	AC mode, unit is operating correctly.
Flashing 2 times, Light off 2s, loop	Battery Error	Battery disconnected or fail 90mins duration test due to insufficient capacity
Flashing 3 times, Light off 2s, loop	Charging Error	Ensure input wiring is correct and verify input voltage & frequency are correct and stable.
Flashing 5 times, Light off 2s, loop	Temp Error	Overtemperature
Continuous Flashing	LED load abnormal	Matching test fail, self-check output abnormality
Fast flashing per 0.1s, sustain 30s	Function test	Carry out automatically every 30 calendar days
Slow flashing per 1s, sustain 90mins	Duration test	Carry out automatically every 180 calendar days

Packing information

Size	L15"×W6"×H3.1"	
Qty/Carton	1 pc	
Net weight	2.425kg	
Gross weight	2.685kg	
	Remote control	1pc
	Wire cap	11pcs
	Installation manual	1pc